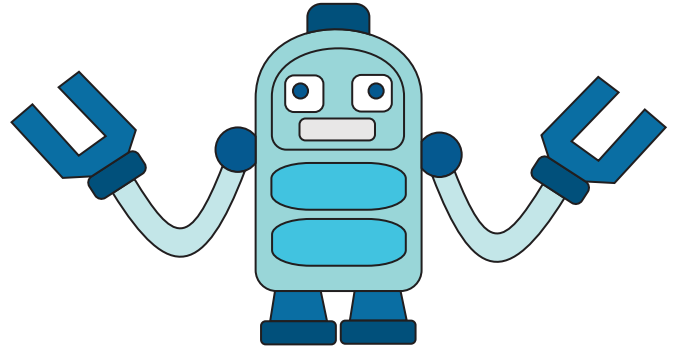


# Trace letter - r

r



robot

Tracing practice lines for the letter 'r'. Each row consists of a solid top line, a dashed middle line, and a solid bottom line. The first row includes a small 'r' with numbered arrows: '1' for the vertical stroke pointing down, and '2' for the curved stroke pointing right. The following four rows contain dashed 'r' characters for tracing, with the first row having four characters and the subsequent three rows having five characters each.