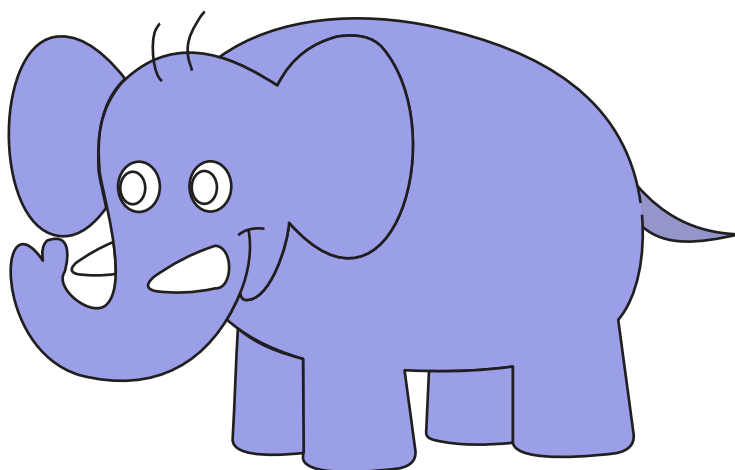


Trace letter - e

e



elephant

Tracing practice lines for the letter 'e'. Each row consists of a solid top line, a dashed middle line, and a solid bottom line. The first row includes a solid 'e' with stroke order arrows (1 for the horizontal bar, 2 for the counter-clockwise curve) followed by four dashed 'e's for tracing. The following seven rows each contain five dashed 'e's for tracing.