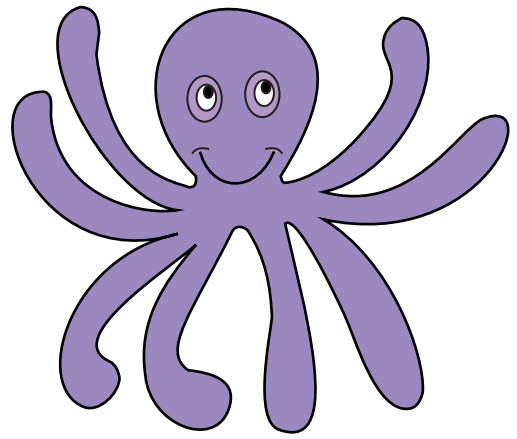
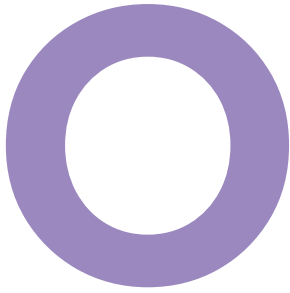


# Trace letter - o



octopus

Tracing practice area with seven rows of handwriting lines. Each row consists of a solid top line, a dashed middle line, and a solid bottom line. The first row starts with a solid black letter 'O' on the left, featuring a small '1' and a curved arrow indicating the counter-clockwise direction of the stroke. This is followed by four dashed 'O' characters for tracing. The remaining six rows each contain five dashed 'O' characters for tracing.