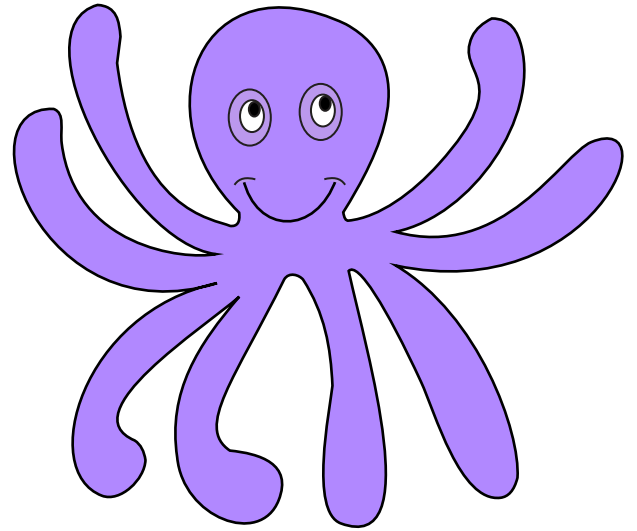
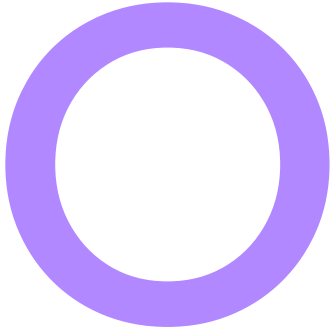


Trace letter - O



OCTOPUS

Tracing practice lines for the letter 'O'. Each line consists of a solid top line, a dashed middle line, and a solid bottom line. The first line starts with a solid black 'O' with a small '1' and a curved arrow indicating the counter-clockwise direction of the stroke. This is followed by four dashed 'O's on the same line. The next five lines each contain five dashed 'O's for tracing.